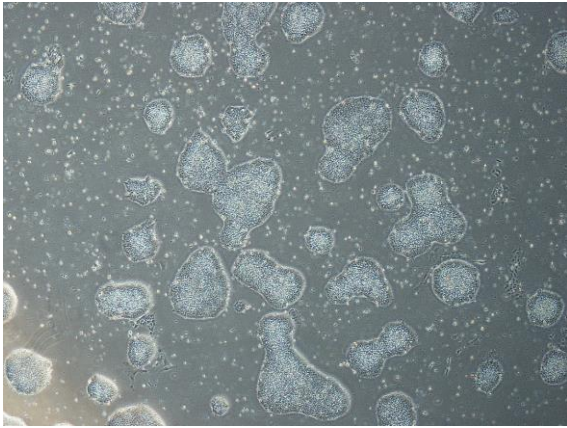
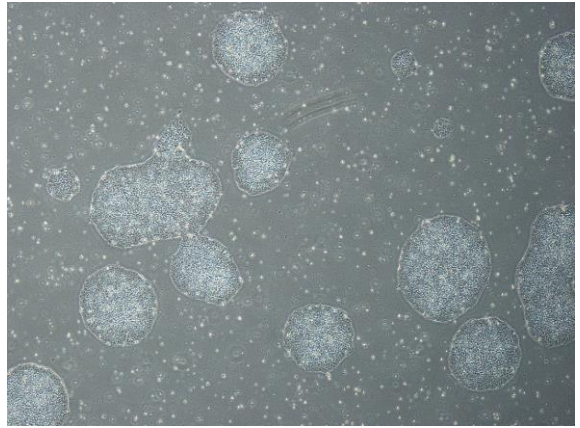


【 CiRA-j-1178 】 Morphology of iPSC colonies

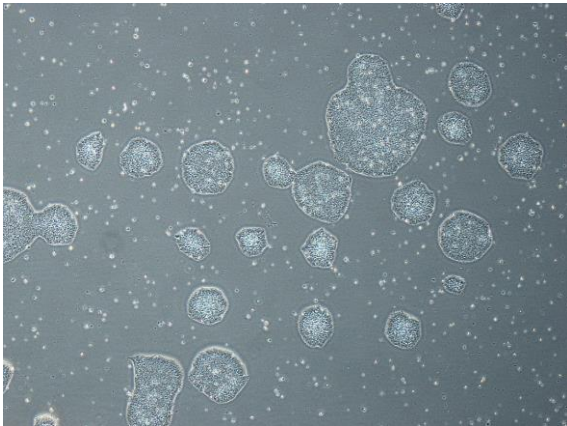
CiRA-j-1178-A: passage-3



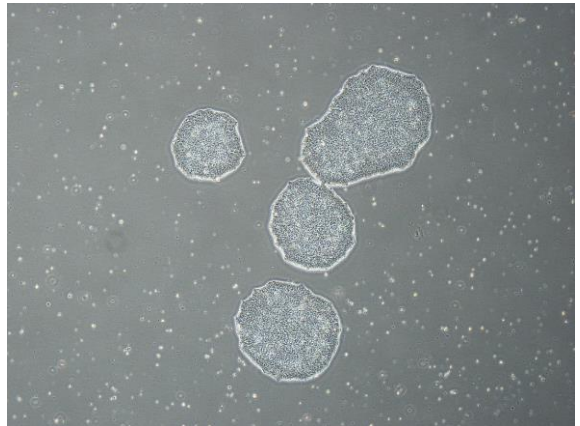
CiRA-j-1178-B: passage-3



CiRA-j-1178-C: passage-3



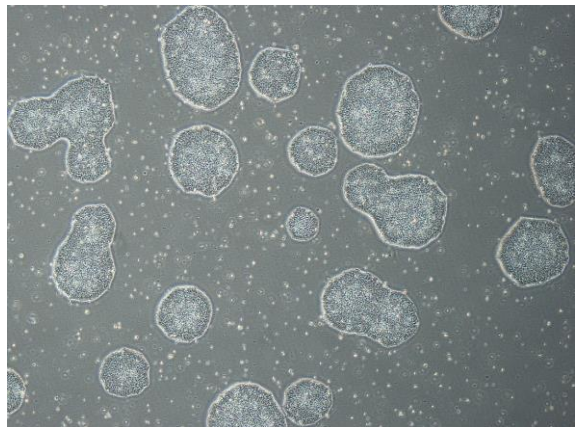
CiRA-j-1178-D: passage-3



CiRA-j-1178-E: passage-3



CiRA-j-1178-F: passage-3



(All images were captured at 4x magnification)